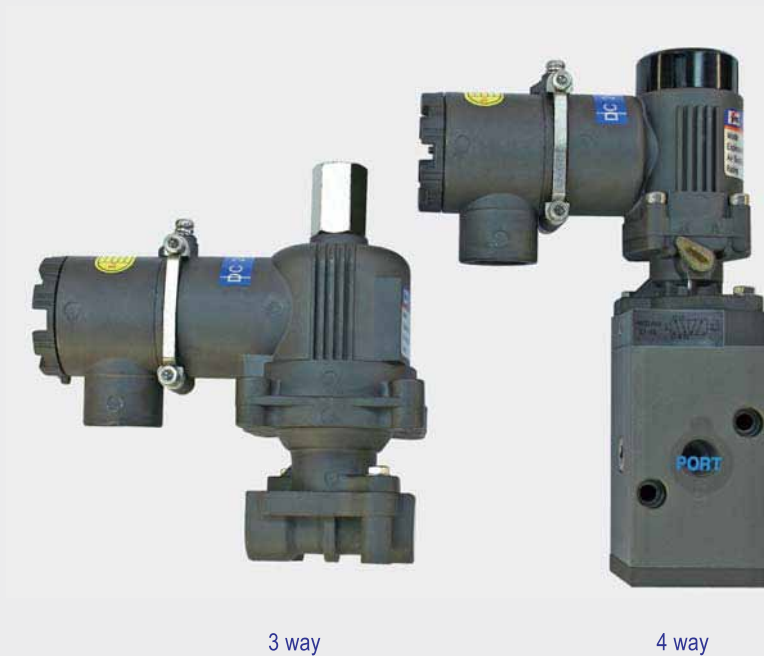


Solenoid Valve YT-700

Product Number: YT-700 (specify your requirement)

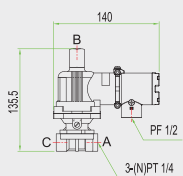
Model	Valve Type	Connection Type	Power Source	Pressure
YT-700	S 3way	P PT	1 AC 110V	1 0~0.4Mpa (3way)
	D 4way	N NPT	2 AC 220V	2 0~0.7Mpa (3way)
			3 DC 24V	3 0.1~1Mpa (4way)



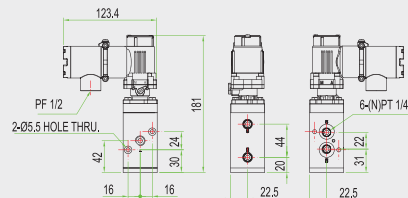
3 way

4 way

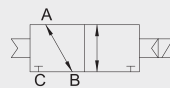
Item · Type	YT-700		
	3 way	4 way	
Max. Supply Pressure	0~0.4MPa 0~0.7MPa	0.1~1MPa	
Flow Capacity (Cv)	Output 0.2(φ3)at 0.4MPa 0.084(φ1.6)at 0.7MPa	0.75	
	Exhaust		0.093
Rating Current	AC 220V	60mA (11w)	30mA(6.6w)
	AC 110V	130mA (12w)	50mA(5.5w)
	DC 24V	580mA (14w)	160mA (3.8w)
Frequency	50~60Hz		
Explosion Proof type	Ex d IIC T6		
Connection Type	PT (NPT) 1/4		
Conduit	PF 1/2 (G1/2)		
Coil Insulation Grade	Class E		
Ambient Temp.	Standard	-20~70 °C (-4~158°F)	
	Explosion	-20~50 °C (-4~122°F)	
Weight	0.8kg (1.8lb)	0.9kg (2.0lb)	



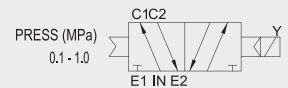
YT-700S (3WAY)



YT-700D (4WAY)



YT-700S (3WAY)



YT-700D (4WAY)

Solenoid valve YT-700 opens and shuts by electrical signal of AC or DC, It is built as explosion-proof structure.

- O-ring shapes: less lubrication required
- Balance spool type: no require of backing spring
- Interchangeable of AC and DC coils
- Manual override switch