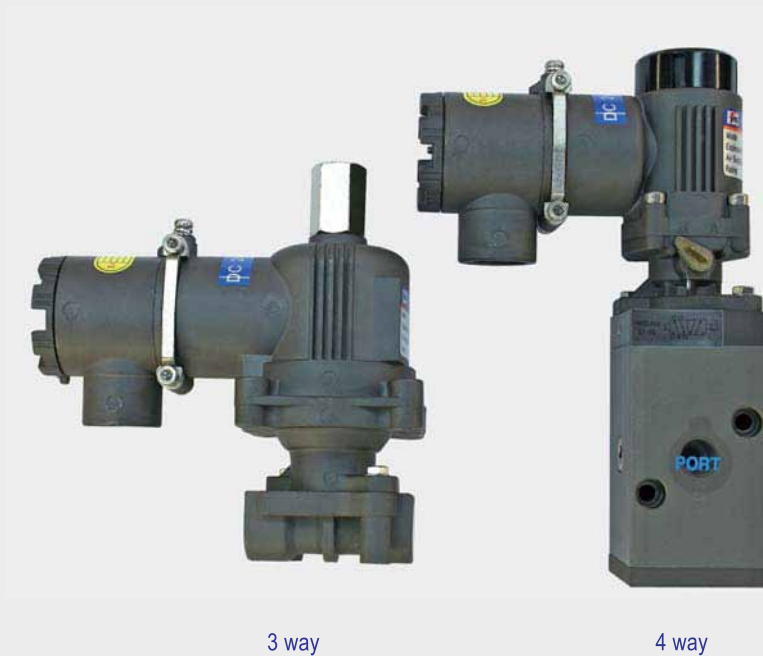


Solenoid Valve YT-700

Product Number: YT-700 (specify your requirement)

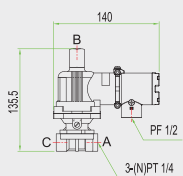
| Model | Valve Type | Connection Type | Power Source | Pressure |
|--------|--|--|---|--|
| YT-700 | S 3way | P PT | 1 AC 110V | 1 0~0.4Mpa (3way) |
| | D 4way | N NPT | 2 AC 220V | 2 0~0.7Mpa (3way) |
| | | | 3 DC 24V | 3 0.1~1Mpa (4way) |



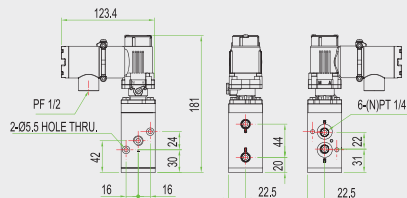
3 way

4 way

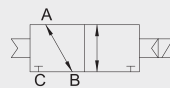
| Item · Type | YT-700 | | |
|-----------------------|--|----------------------|--------------|
| | 3 way | 4 way | |
| Max. Supply Pressure | 0~0.4MPa 0~0.7MPa | 0.1~1MPa | |
| Flow Capacity (Cv) | Output 0.2(φ3)at 0.4MPa 0.084(φ1.6)at 0.7MPa | 0.75 | |
| | Exhaust | | 0.093 N/A |
| Rating Current | AC 220V | 60mA (11w) | 30mA(6.6w) |
| | AC 110V | 130mA (12w) | 50mA(5.5w) |
| | DC 24V | 580mA (14w) | 160mA (3.8w) |
| Frequency | 50~60Hz | | |
| Explosion Proof type | Ex d IIC T6 | | |
| Connection Type | PT (NPT) 1/4 | | |
| Conduit | PF 1/2 (G1/2) | | |
| Coil Insulation Grade | Class E | | |
| Ambient Temp. | Standard | -20~70 °C (-4~158°F) | |
| | Explosion | -20~50 °C (-4~122°F) | |
| Weight | 0.8kg (1.8lb) | 0.9kg (2.0lb) | |



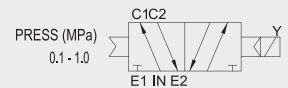
YT-700S (3WAY)



YT-700D (4WAY)



YT-700S (3WAY)



YT-700D (4WAY)

Solenoid valve YT-700 opens and shuts by electrical signal of AC or DC, It is built as explosion-proof structure.

- O-ring shapes: less lubrication required
- Balance spool type: no require of backing spring
- Interchangeable of AC and DC coils
- Manual override switch