

REV.NO.	REVISION DESCRIPTION	DRAWN / DATE	REVIEWED / DATE	APPROVED / DATE
△1	ISSUE FOR APPROVAL	HSS/050601	JCS/050601	LYH/050601
△1	ISSUE FOR APPROVAL	MDK/111118	JCS/111118	LYH/111118

**SPECIFICATIONS**

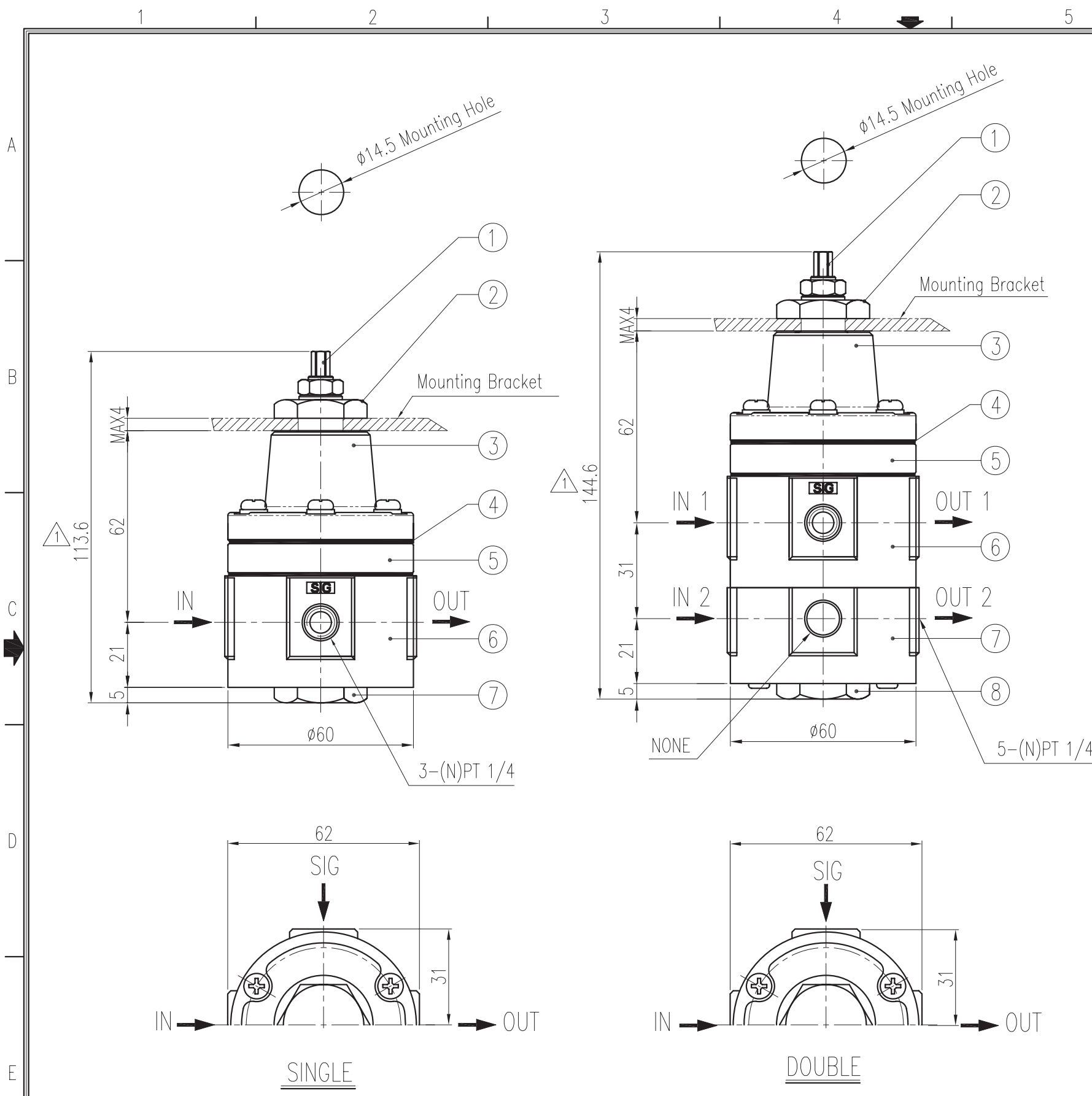
Item . Type	YT-400	
	<input type="checkbox"/> Single	<input type="checkbox"/> Double
Signal Pressure	0.14 ~ 0.7MPa (1.4 ~ 7bar)	
Pressure Range	Max. 1MPa (10bar)	
Lock-Up Pressure	Max. 0.7MPa (7bar)	
Differential Pressure	Below 0.01MPa (1.4bar)	
Air Connection	<input type="checkbox"/> PT 1/4 <input type="checkbox"/> NPT 1/4	
Material	Aluminum Diecasting	
Weight	0.47kg (1.04lb)	0.7kg (1.5lb)

**SINGLE**

NO.	PART NAME	MATERIAL	Q'TY	REMARK
7	PLUG	C3604BD + Ni PLATED	1	
6	BODY	ALDC12	1	
5	EXHAUST RING	ALDC12	1	
4	DIAPHRAGM	N.B.R	2	
3	COVER	ALDC12	1	
2	MOUNTING NUT	C3604BD + Ni PLATED	1	
1	ADJUST BOLT	STS 303	1	

**DOUBLE**

NO.	PART NAME	MATERIAL	Q'TY	REMARK
8	PLUG	C3604BD + Ni PLATED	1	
7	LOWER-BODY	ALDC12	1	
6	UPPER-BODY	ALDC12	1	
5	EXHAUST RING	ALDC12	1	
4	DIAPHRAGM	N.B.R	2	
3	COVER	ALDC12	1	
2	MOUNTING NUT	C3604BD + Ni PLATED	1	
1	ADJUST SHAFT	STS 303	1	



SURFACE TEXTURE	PRODUCT NAME	LOCK UP VALVE	
FINISH TREATMENT	MODEL	YT-400	
MATERIAL	PROJECTION	3rd	SCALE 1 / 1.5
OTHERWISE NOTE	GENERAL TOLERANCE	QUANTITY 1	SHEET No. 1 / 1

PROJECT NAME		-	
TITLE			
LOCK UP VALVE ASS'Y DWG			
DRAWING NO.			REV.
YT-400 (STANDARD)			1