

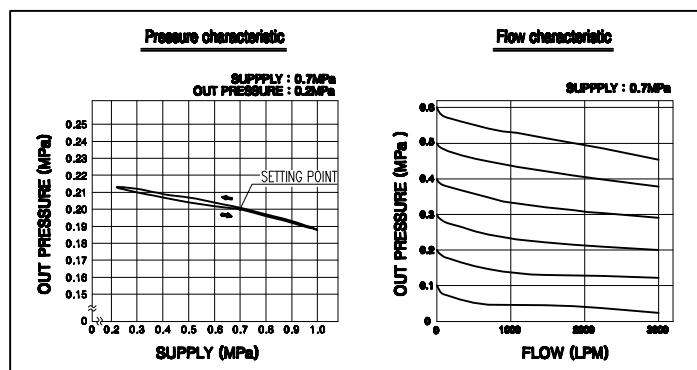
Specification

Applicable Fluid	Air	
Applicable Inlet Pressure	Max. 1.5 MPa	
Adjustment Output Pressure Range	<input type="checkbox"/> 0.05 ~ 0.42 MPa (4.2 bar)	
	<input type="checkbox"/> 0.05 ~ 0.84 MPa (8.4 bar)	
Applicable Temperature	Standard	<input type="checkbox"/> -20 ~ 70 °C (-4~158°F)
	High	<input type="checkbox"/> -20 ~ 120 °C (-4~248°F)
	Low	<input type="checkbox"/> -40 ~ 70 °C (-40~158°F)
Min. Filtering Size	5 micron	
Air Connection	<input type="checkbox"/> PT 1/2	<input type="checkbox"/> NPT 1/2
Gauge Connection	<input type="checkbox"/> PT 1/4	<input type="checkbox"/> NPT 1/4
Material	STS 316	
Weight	2.77kg (6.1lb)	

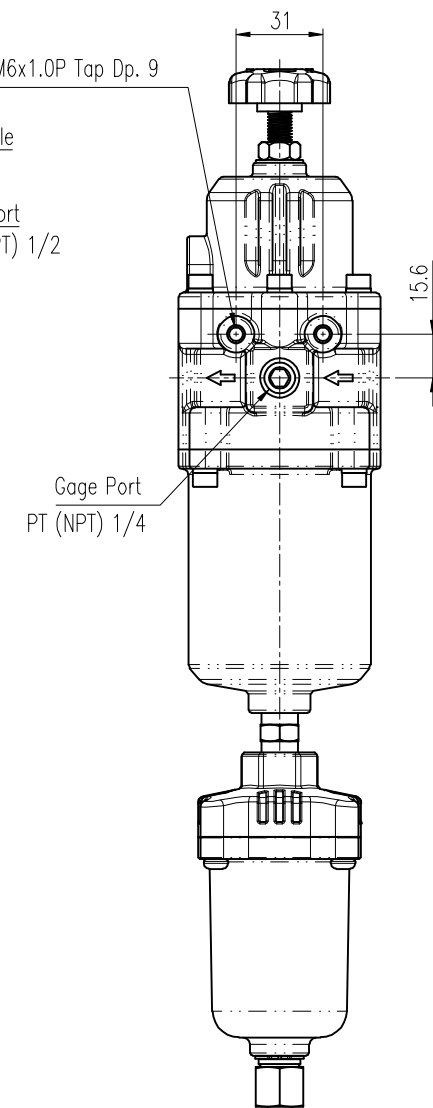
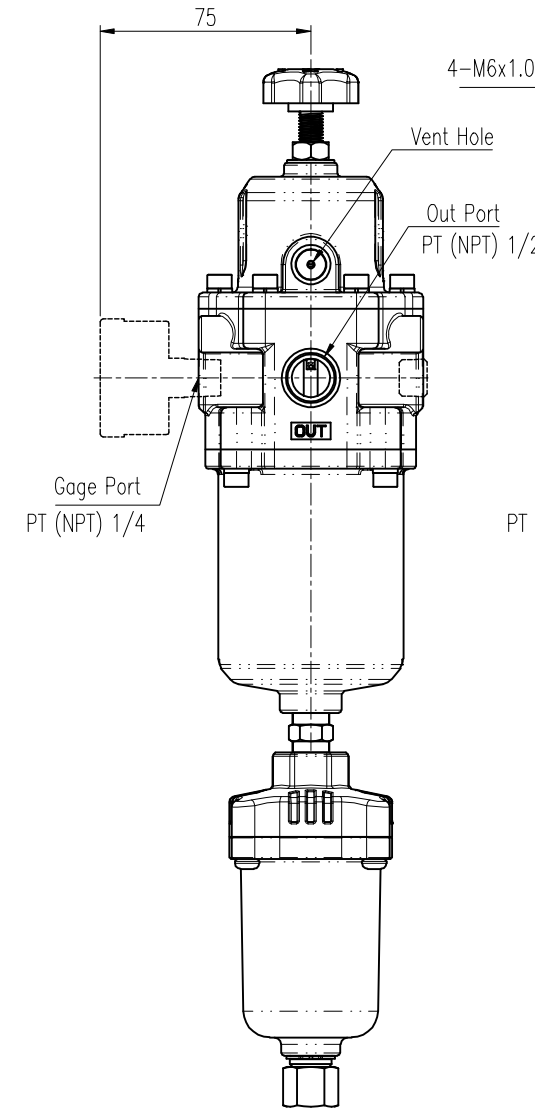
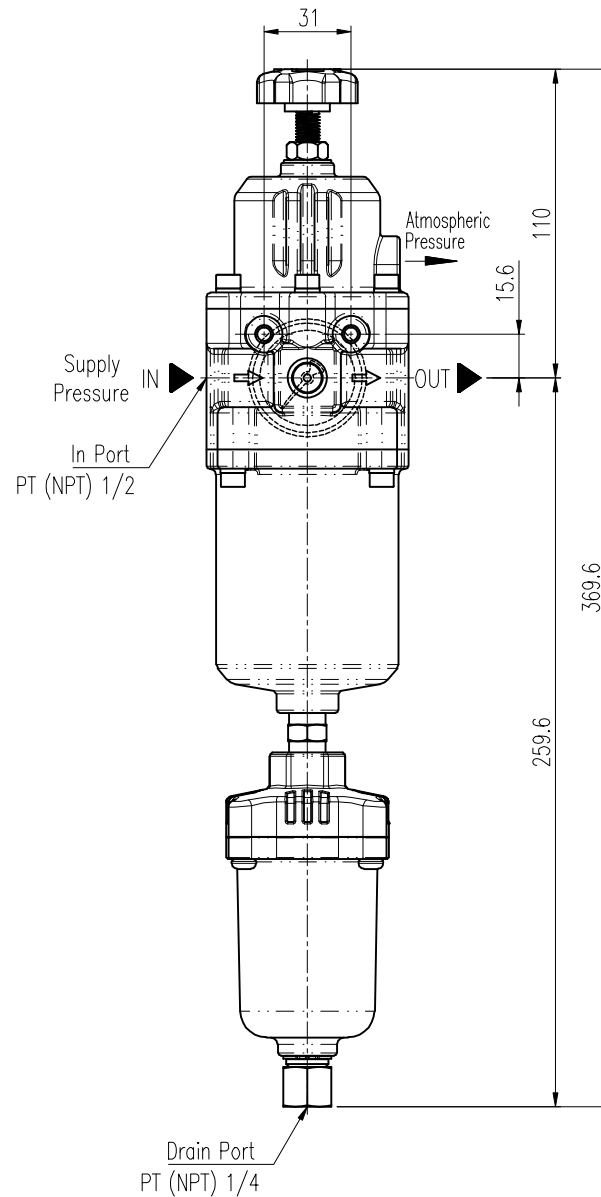
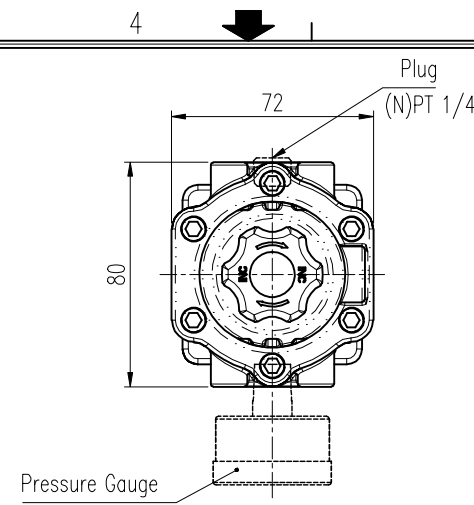
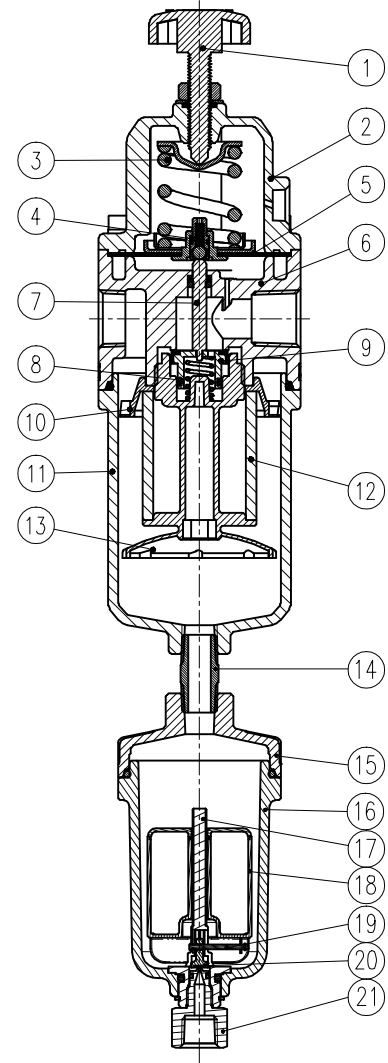
Part List

NO.	PART NAME	MATERIAL	REMARK
1	ADJUST BOLT	STS 304 + PC	
2	CASE SPRING	STS316	
3	SPRING ADJUST	STS316	
4	SEAT RELIEF	ACETAL	
5	DIAPHRAGM ASS'Y	NBR , STS 304, ACETAL	일반용
6	BODY BASE	STS316	
7	STEM	STS303	
8	O-RING	NBR	일반용
		SILICONE	내한, 내열용
9	SEAT	STS303 + NBR	일반용
		STS303 + SILICONE	내한, 내열용
10	DEFLECTOR	ACETAL	
11	CASE FILTER	STS316	
12	FILTER ELEMENT	POLY ETHYLENE	일반, 내한용
		BRONZE	내열용
13	BAFFLE	ACETAL	
14	NIPPLE (1/4)	STS316	
15	AUTODRAIN ADAPTER	STS316	
16	CASE FILTER-AUTO DRAIN	STS316	
17	GUIDE FLOAT-AUTO DRAIN	ACETAL	
18	ASSY FLOAT-AUTO DRAIN	ACETAL	
19	LEVER FLOAT-AUTO DRAIN	STS303	
20	SEAT	PC + NBR	일반용
		PC + SILICONE	내한, 내열용
21	PLUG DRAIN-AUTO DRAIN	STS316	

Characteristic



REV.NO.	REVISION DESCRIPTION	DRAWN / DATE	REVIEWED / DATE	APPROVED / DATE
△	ISSUE FOR APPROVAL	MDK/120530	JCS/120530	LYH/120530
△				



SURFACE TEXTURE	PRODUCT NAME AIR FILTER REGULATOR	YTC YOUNG TECH CO., LTD. <small>SEOUL, KOREA</small>	
FINISH TREATMENT	MODEL YT-225	TITLE AIR FILTER REGULATOR-AUTO DRAIN	
MATERIAL	PROJECTION SCALE 1 / 2.5	DRAWING NO. YT-225 (AUTO DRAIN)	REV. 0
OTHERWISE NOTE	GENERAL TOLERANCE	QUANTITY SHEET No. 1 / 1	

PROJECT NAME _____