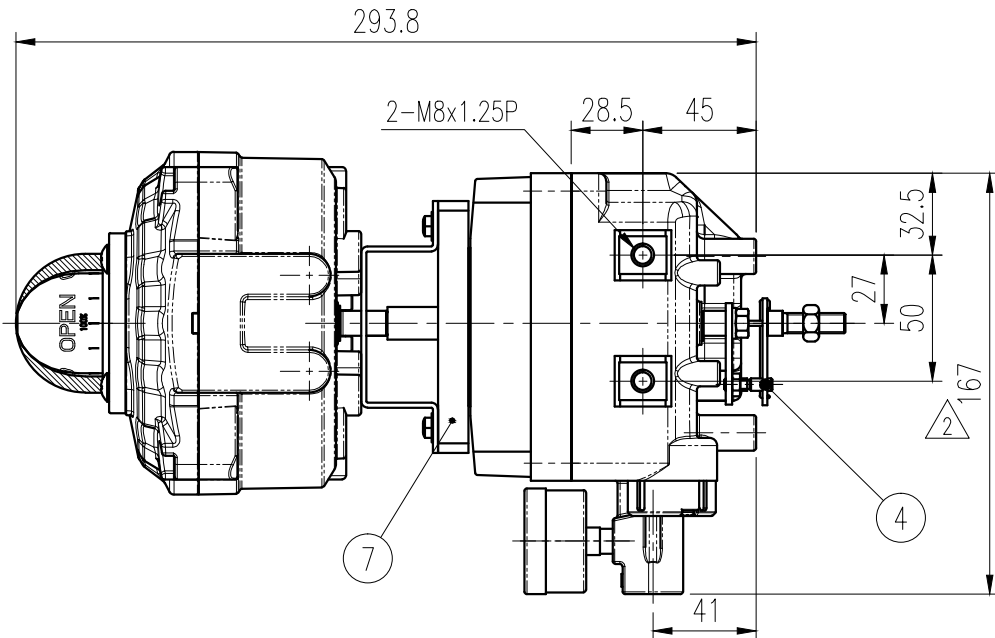
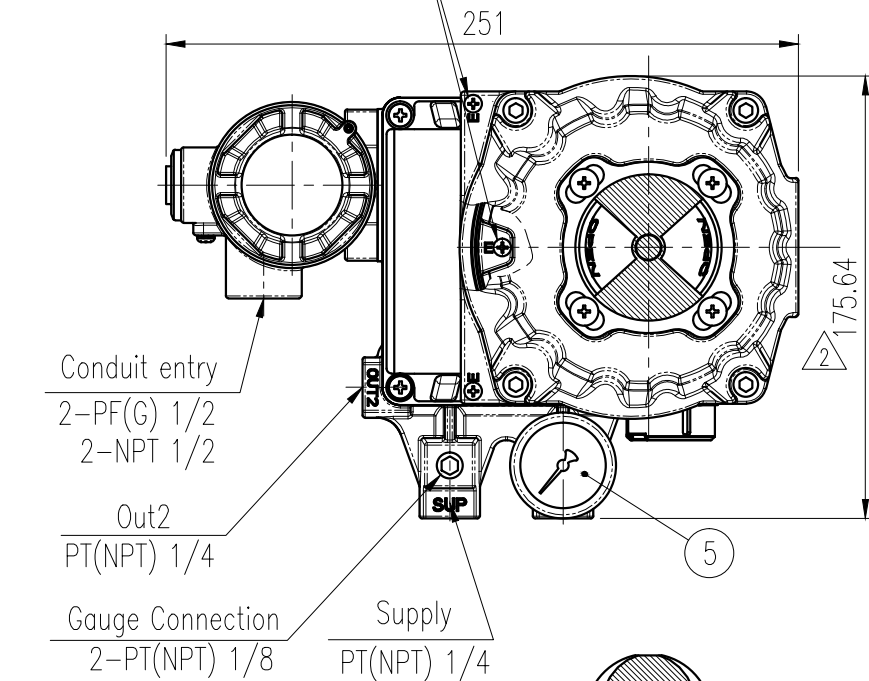
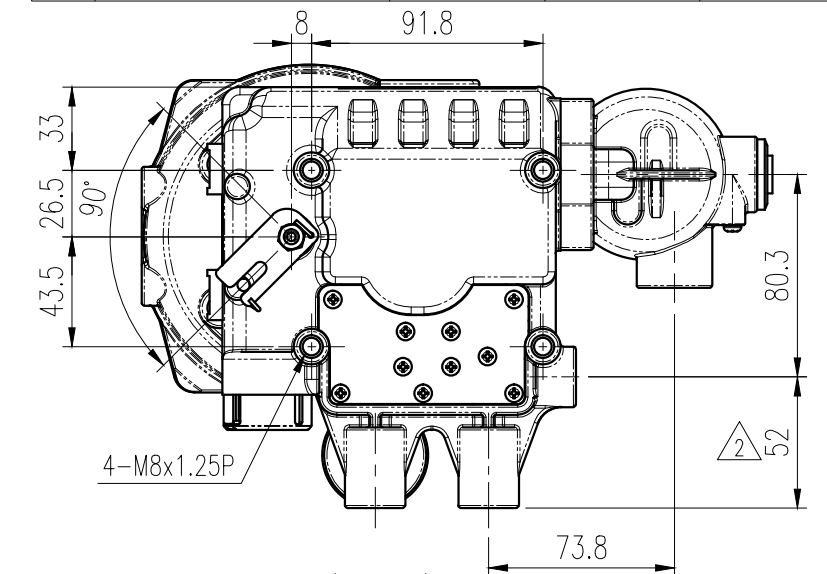


Earth (External, Internal)

1. Minimum Size Wire 1mm<sup>2</sup> or 18AWG.
2. M4\*5 0.7P Round Head Screw
3. M4 Spring washer



REV.NO.	REVISION DESCRIPTION	DRAWN / DATE	REVIEWED / DATE	APPROVED / DATE
△	ISSUE FOR APPROVAL	JCS/100503		LYH/100503
△	DRAWING ARRANGEMENT	LJS/110415	KCH/110415	LYH/110415
△	DRAWING ARRANGEMENT	MDK/110812	JCS/110812	LYH/110812

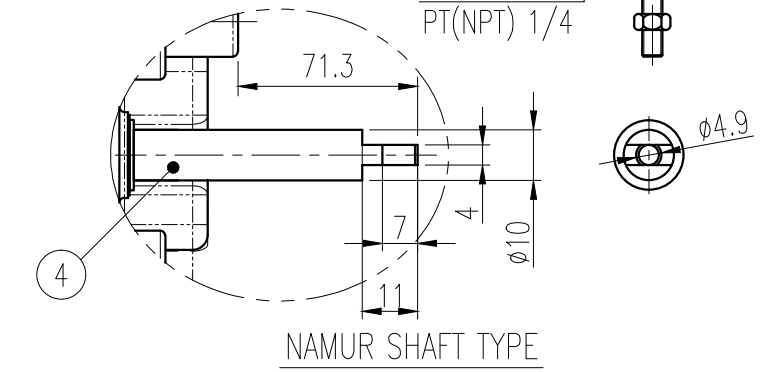
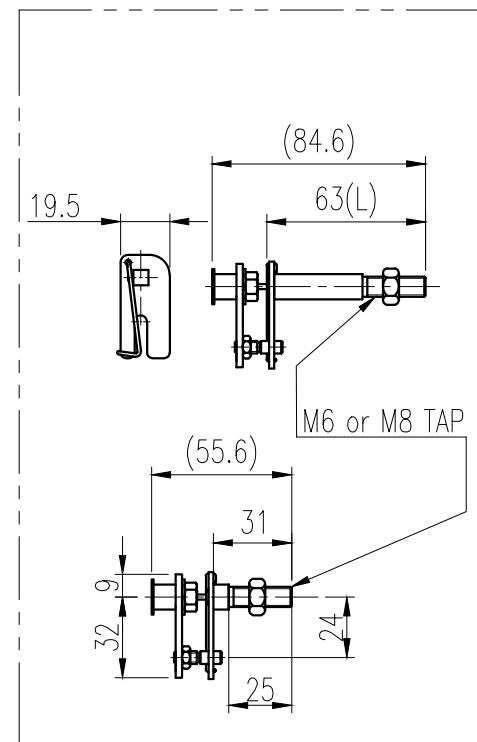
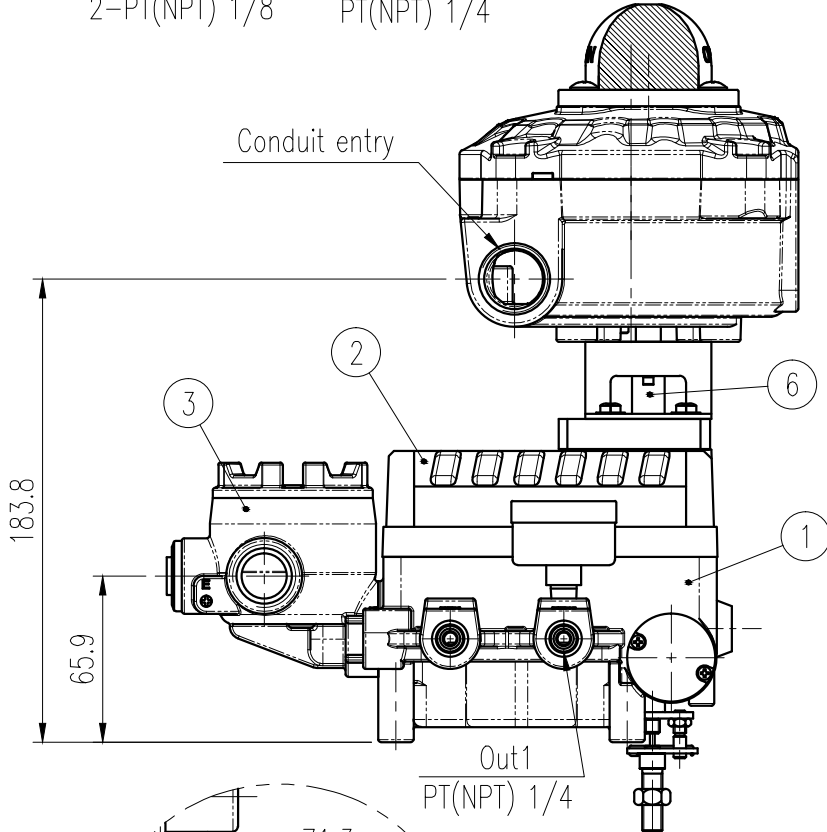


**SPECIFICATIONS**

Applicable Fluid	Air	
Acting Type	<input type="checkbox"/> Single	<input type="checkbox"/> Double
Input Signal	4 ~ 20 mA DC	
Impedance	250±15 Ω	
Supply Pressure	0.14 ~ 0.7MPa (1.4 ~ 7bar)	
Stroke	0° ~ 90°	
Pressure Gauge	<input type="checkbox"/> 0.4MPa	<input type="checkbox"/> 0.8MPa
Linearity	±1.0% F.S.	±2.0% F.S.
Hysteresis	±1.0% F.S.	
Sensitivity	±0.2% F.S.	±0.5% F.S.
Repeatability	±0.5% F.S.	
Ambient Temp	Operation	-20°C ~ 70°C (-4 ~ 158°F)
	Explosion	-20°C ~ 60°C (-4 ~ 140°F)
Air Connection	PT(NPT) 1/4	
Gauge Connection	PT(NPT) 1/8	
Conduit entry	PF 1/2 (G 1/2), NPT 1/2	
Explosion Proof	<input type="checkbox"/> Ex dm IIB T5	<input type="checkbox"/> Ex dm IIB T5(FM)
	<input type="checkbox"/> Ex dm IIC T5	<input type="checkbox"/> Ex ia IIB T6
	<input type="checkbox"/> Non-Explosion	
Air Consumption	< 3 LPM (Sup.=0.14MPa, 1.4bar)	
Flow Capacity	> 80 LPM (Sup.=0.14MPa, 1.4bar)	
Protection	IP66	
Weight	2.7kg (6.1lb)	
Lever Type	<input type="checkbox"/> M6	<input type="checkbox"/> L=34
	<input type="checkbox"/> M8	<input type="checkbox"/> L=63
Material	ALUMINUM DIECASTING	

**SPECIFICATIONS (YT-870)**

Model	YT-870M		
Limit Switch	Switch Type	Mechanical Switch(2*SPDT)	
		SS5GL (Omron)	
	Switch Rating	AC	250V 3A, 125V 5A
		DC	250V 0.2A, 125V 0.4A, 30VDC 4A, 14VDC 5A, 8VDC 5A
Terminal	8 Point		
Enclosure Protection	Weather proof. IP67		
Explosion Proof	Ex d IIC T6		
Ambient Temp.	-20°C ~ 80°C		
Conduit Entry	2 - 1/2(NPT, PT, PF)		
	3/4(NPT, PT, PF), M20*1.5P		
Material	Aluminum Diecasting		
Weight	1.5kg (3.3lb)		



7	BRACKET BLOCK	AL	1	
6	ADAPTER	STS 303	1	
5	PRESSURE GAUGE	STS 304	1	
4	CONNECT LEVER ASS'Y	STS 303, 304P	1	FORK LEVER, NAMUR
3	JUNCTION BOX	ALDC12	1	
2	COVER BASE	ALDC12	1	
1	BODY BASE	ALDC12	1	
NO.	PART NAME	MATERIAL	Q'TY	REMARK

SURFACE TEXTURE	PRODUCT NAME	E/P POSITIONER with LS(EXTERNAL)		YOUNG TECH CO., LTD. SEOUL, KOREA
FINISH TREATMENT	MODEL	YT-1000R + YT-870		
MATERIAL	PROJECTION	3rd	SCALE	1 / 3
OTHERWISE NOTE	GENERAL TOLERANCE	QUANTITY	SHEET No.	1 / 1
		1		
TITLE				ELECTRO PNEUMATIC POSITIONER ASS'Y DWG with L/S(EXTERNAL)
DRAWING NO.				YT-1000R+L/S (EXTERNAL)
REV.				2

